

MA

Axial fan condenser
Commercial range



HFC



|||| 2.8 - 12.4 kW



- # **Modular concept** (coil + separate motors) where blowing is possible both vertically and horizontally.
- # The quick connection of the motor fan enables **easy installation**.
- # "Plug & play" motor fan for **easy maintenance**.

VENTILATION

- # 2 single-fan models and 1 dual-fan model, Ø 355 mm.
- # Available in 04P, 06P and 08P ensuring an optimal noise level.
- # Motor fan(s) delivered unmounted, cable gland to be positioned at the bottom.

COILS

- # Aluminium fins with 3.17 mm spacing.
- # Combined with staggered copper tubes, the coils are very efficient and compact.
- # Completely covered with polyester protection as standard.

CASING

- # Galvanized sheet steel covered with white polyester paint.

OPTIONS

PIE

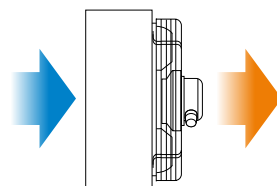
Feet for floor mounting allowing vertical air discharge.

KIT TO INSTALL

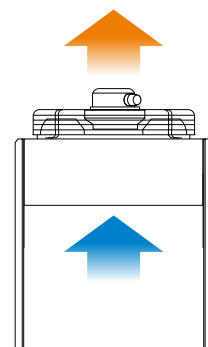


Both horizontal and vertical installation are possible with the standard feet!

In case of installation with horizontal air direction, remember to take into account the direction of the prevailing winds to avoid any risk of recirculation of hot air!



Horizontal air position



Vertical air position

MA 1_(A) 04P_(B)

(A) Model
 (B) **04P** = 1,300 rpm
06P = 910 rpm
08P = 650 rpm

The MA is available with HFCs.
 For more information, please
 consult our software.

| CONDITIONS | REFRIGERANTS | MA ... |
|------------------------|---------------|------------------------|
| DT = 15K | R449A | kW |
| Surface area | | m² |
| Circuit volume | | dm³ |
| Fan 230V/1/50Hz (1) | Airflow | m³/h |
| | Nb x Ø | mm |
| Energy class | | |
| Acoustics | Lw (2) | dB(A) |
| | Lp (3) | dB(A) |
| Inlet | Ø E | ODF* / ODM** |
| Outlet | Ø S | ODF* / ODM** |
| Net weight with fan(s) | | kg |

| CONDITIONS | REFRIGERANTS | MA ... |
|------------------------|---------------|------------------------|
| DT = 15K | R449A | kW |
| Surface area | | m² |
| Circuit volume | | dm³ |
| Fan 230V/1/50Hz (1) | Airflow | m³/h |
| | Nb x Ø | mm |
| Energy class | | |
| Acoustics | Lw (2) | dB(A) |
| | Lp (3) | dB(A) |
| Inlet | Ø E | ODF* / ODM** |
| Outlet | Ø S | ODF* / ODM** |
| Net weight with fan(s) | | kg |

| CONDITIONS | REFRIGERANTS | MA ... |
|------------------------|---------------|------------------------|
| DT = 15K | R449A | kW |
| Surface area | | m² |
| Circuit volume | | dm³ |
| Fan 230V/1/50Hz (1) | Airflow | m³/h |
| | Nb x Ø | mm |
| Energy class | | |
| Acoustics | Lw (2) | dB(A) |
| | Lp (3) | dB(A) |
| Inlet | Ø E | ODF* / ODM** |
| Outlet | Ø S | ODF* / ODM** |
| Net weight with fan(s) | | kg |

MA ... 04P - (1,300 rpm)

3.17 mm

| | 1 04P | 2 04P | 3 04P |
|--|--------------|------------|-------------|
| | 4,1 | 8,0 | 12,4 |
| | 5,7 | 13,0 | 20,9 |
| | 0,9 | 1,9 | 3,4 |
| | 1970 | 2300 | 4200 |
| | 1 x 355 | 1 x 355 | 2 x 355 |
| | E | D | E |
| | 77 | 77 | 80 |
| | 46 | 46 | 49 |
| | 8 mm-3/8"ODM | 1/2" | 5/8" |
| | 8 mm-3/8"ODM | 1/2" | 5/8" |
| | 7 | 12 | 15 |

MA ... 06P - (910 rpm)

3.17 mm

| | 1 06P | 2 06P | 3 06P |
|--|--------------|------------|------------|
| | 3,2 | 6,0 | 9,4 |
| | 5,7 | 13,0 | 20,9 |
| | 0,9 | 1,9 | 3,4 |
| | 1220 | 1450 | 2650 |
| | 1 x 355 | 1 x 355 | 2 x 355 |
| | E | D | D |
| | 68 | 68 | 71 |
| | 37 | 37 | 40 |
| | 8 mm-3/8"ODM | 1/2" | 5/8" |
| | 8 mm-3/8"ODM | 1/2" | 5/8" |
| | 7 | 12 | 15 |

MA ... 08P - (650 rpm)

3.17 mm

| | 1 08P | 2 08P | 3 08P |
|--|--------------|------------|------------|
| | 2,9 | 5,0 | 8,0 |
| | 5,7 | 13,0 | 20,9 |
| | 0,9 | 1,9 | 3,4 |
| | 950 | 1110 | 2060 |
| | 1 x 355 | 1 x 355 | 2 x 355 |
| | E | D | D |
| | 57 | 57 | 60 |
| | 26 | 26 | 29 |
| | 8 mm-3/8"ODM | 1/2" | 5/8" |
| | 8 mm-3/8"ODM | 1/2" | 5/8" |
| | 7 | 12 | 15 |

(1) 04P: 205 W max - 0.90 A max (4) - 06P: 95 W max - 0.45 A max (4) - 08P: 74 W max - 0.35 A max (4)

(2) Sound power level in dB(A), obtained in accordance with standard NF EN 13487 (parallelepiped reference surface).

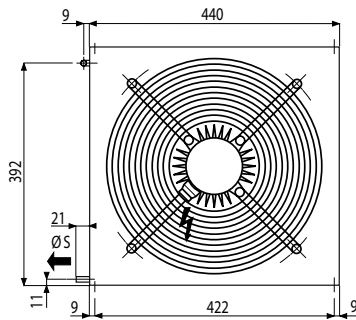
(3) Sound pressure in dB(A) measured at 10 m, parallelepiped measuring surface, in a free field over a reflecting plane, given as an indication only. Values measured under nominal operating conditions, with clean coil, at rated voltage.

(4) Adjustment of overload protection.

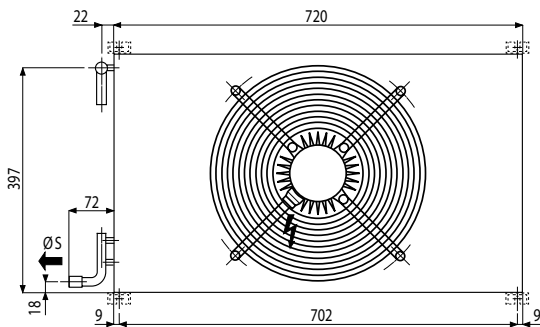
* ODF: female to receive the tube of the same diameter.

** ODM: male to receive the tube of the same diameter.

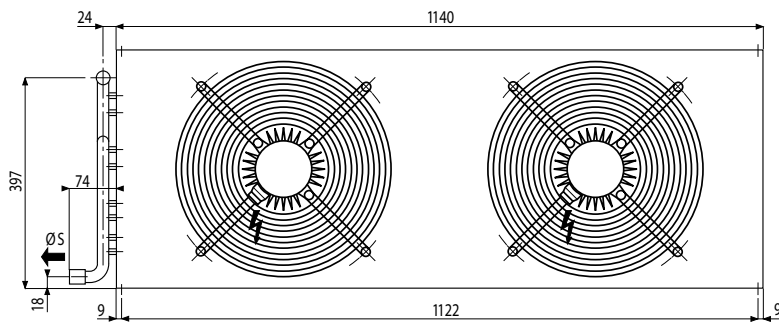
MA 1



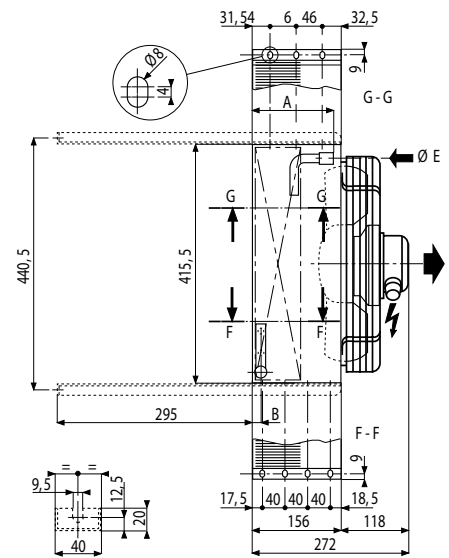
MA 2



MA 3



MA 1 - 2 - 3



| | | MA 1 ... | MA 2 ... | MA 3 ... |
|-------------|-----------|----------------------|----------------------|----------------------|
| A | mm | 125 | 122 | 122 |
| B | mm | 34 | 15 | 15 |
| Packing | mm | 570 x 430 x 185 | 880 x 430 x 185 | 1280 x 460 x 185 |
| Fan package | mm | 460 x 460 x 185 (x1) | 460 x 460 x 185 (x1) | 460 x 460 x 185 (x2) |